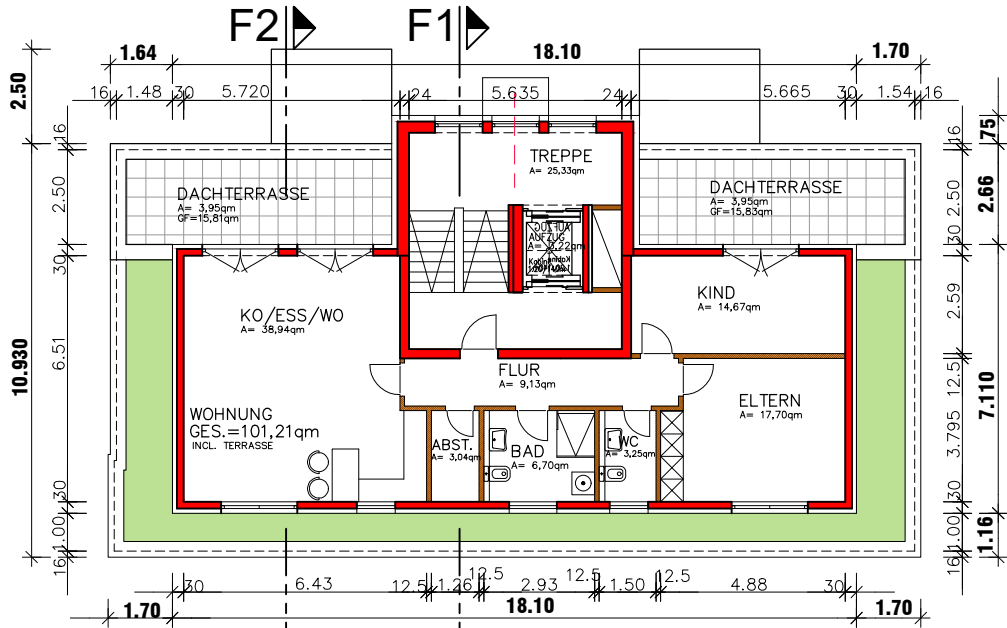
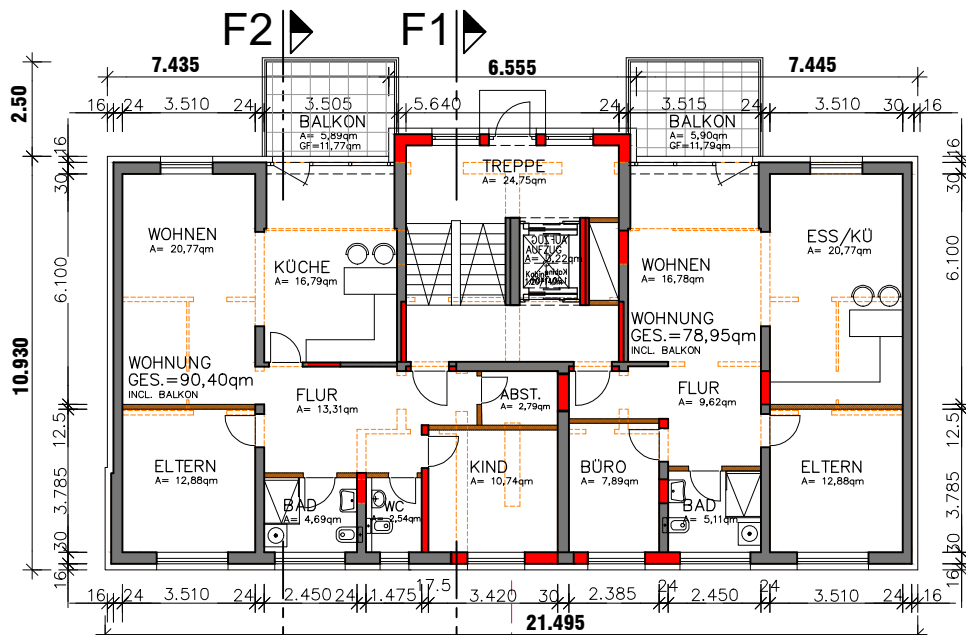


WOHNANLAGE MENDIG "OBER DEN FÜNF MORGEN"



STAFFELGESCHOSS

BGF. - DG. = 151,04qm
WFL. = 101,21qm



EG.+I.OG.+II.OG.

BGF. - EG.+I.+ II.OG. = 239,36qm (2/3=159,57qm)
WFL. li. = 3 x 90,40qm
WFL. re. = 3 x 78,95qm

DROSSELWEG
HAUS NR.4
Typ E

PLAN
NR.:

1

ENTWURF - DROSSELWEG 2+4

EG., I.+ II.OG.+ DG.
MASZTAB = 1 : 200

ECHTERNACH, 08-07-2021

ARCHITEKT:



LUDES
ARCHITECTE S.à r. l.
L-6440 ECHTERNACH TEL. 00352-726267
57, RUE DE LA GARE FAX 00352-726268