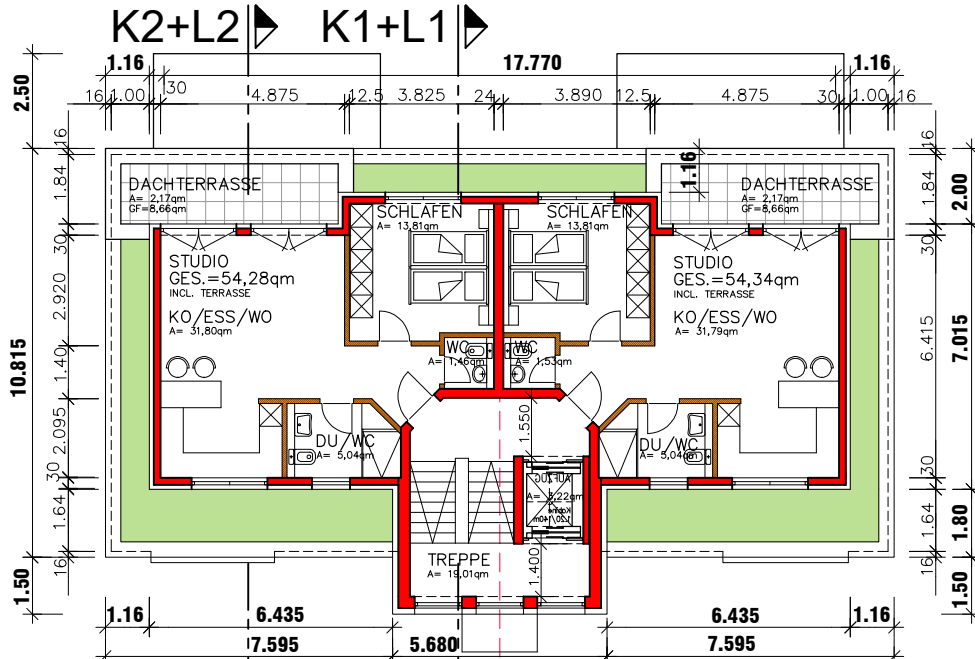
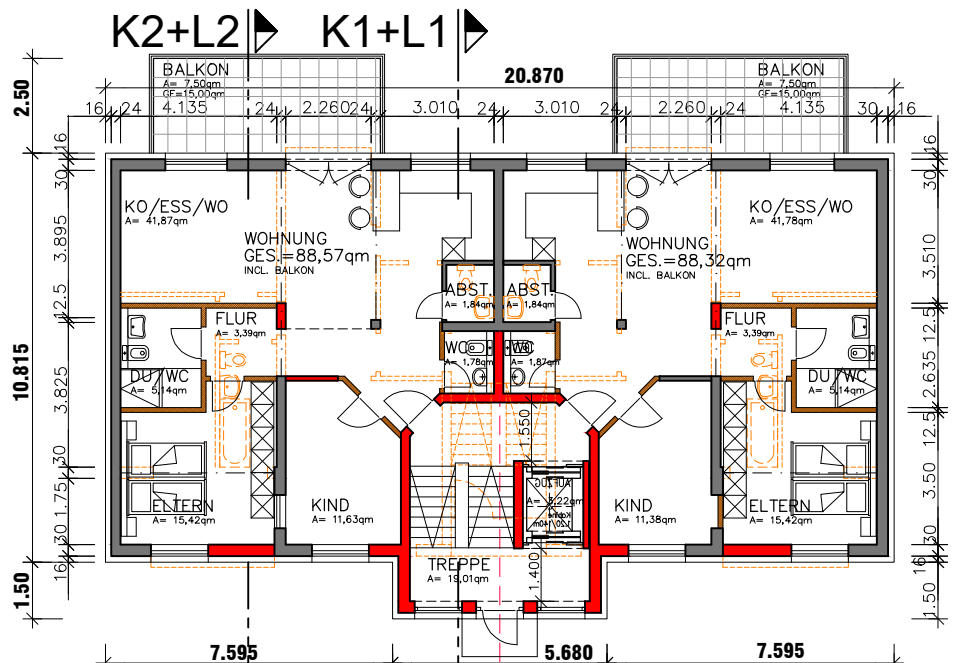


# WOHNANLAGE MENDIG "OBER DEN FÜNF MORGEN"



BGF. - DG. = 156,08qm  
WFL. li. = 54,28qm  
WFL. re. = 54,34qm

**K2+L2** **K1+L1**



BGF. - EG. + I. + II. OG. = 234,25qm (2/3=156,17qm)  
WFL. li. = 3 x 88,57qm  
WFL. re. = 3 x 88,32qm

**AMSELWEG  
HAUS NR. 1+3  
Typ D**

**K2+L2** **K1+L1**

**ENTWURF AMSELWEG 1+3**

EG., I. + II. OG. + DG.  
MASZTAB = 1 : 200

ECHTERNACH, 08-07-2021

ARCHITEKT:



**LUDES**  
ARCHITECTE S. à r. l.  
L-6440 ECHTERNACH TEL. 00352-726267  
57, RUE DE LA GARE FAX 00352-726268

PLAN  
NR.:

1